

DuROCK InsulROCK EIFS

Exterior Insulation Finish System
for Commercial and High Rise Construction

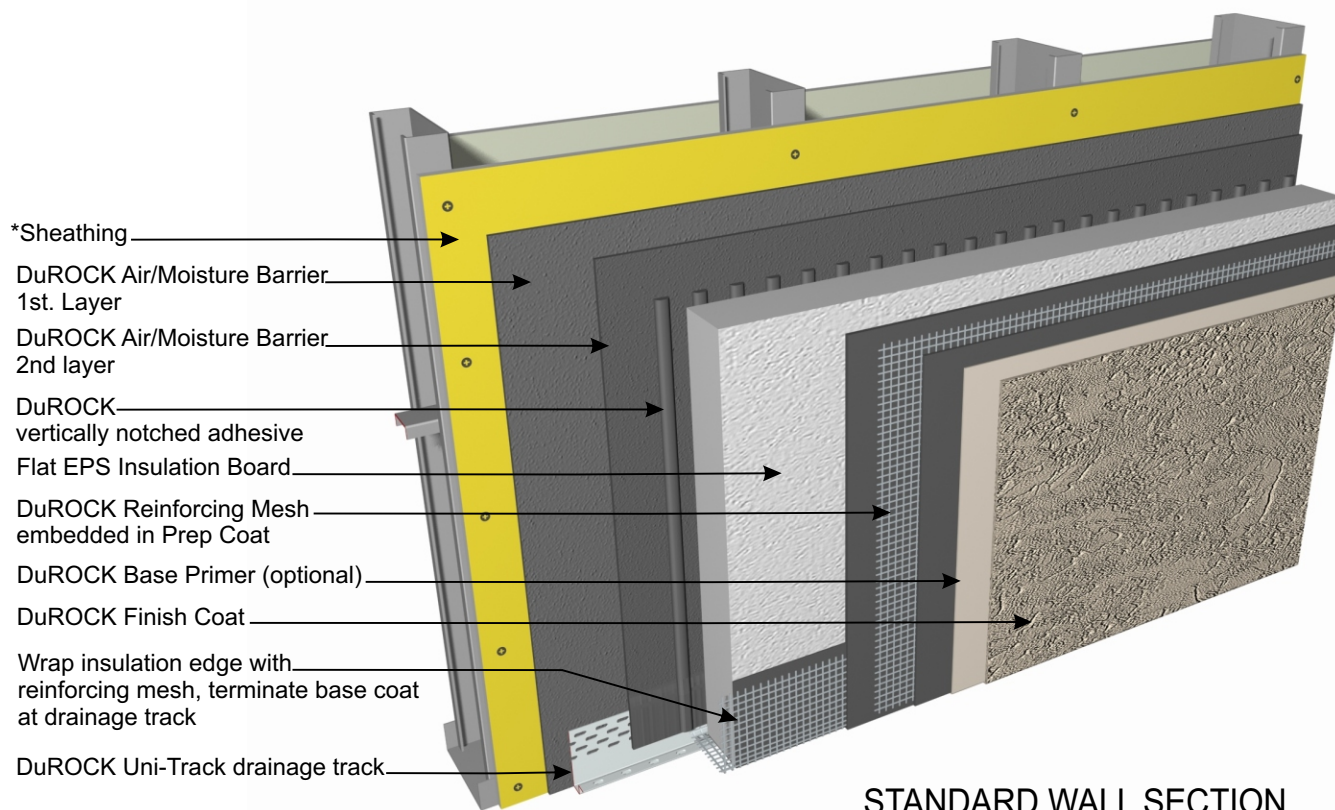
InsulROCK

Exterior Insulation Finish System

CCMC No. 12969-R

DuROCK

ARCHITECTURAL FINISHING SYSTEMS

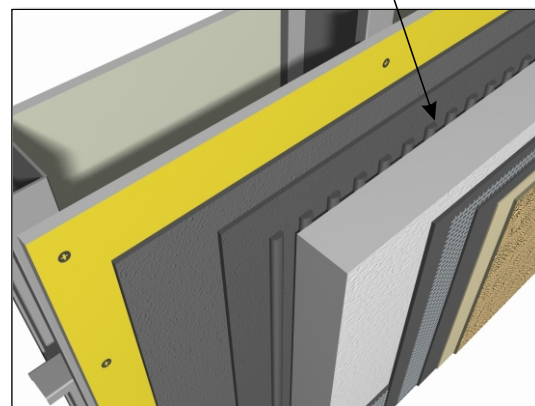


(* by others)

InsulROCK EIFS has been evaluated by CCMC for compliance to the Technical Guide for EIFS. This system is certified for use on buildings required to be of non-combustible construction and on buildings over three storeys in height in accordance with the fire resistance requirements of the model building code.

InsulROCK EIFS may incorporate Polar Bear, Vapour Block, or Cement Bear as the moisture barrier. For clarity of illustration, all details show Cement Bear only.

Moisture drainage through vertical adhesive ribbons



Alfacing International Limited

101 B.ROYTEC ROAD, WOODBRIDGE, ON. L4L 8A9

TEL: (905) 856-0133, FAX: (905) 856-9654

www.durock.com

ARCHITECTURAL FINISHING SYSTEMS

This detail complements the corresponding system specification and illustrates the system configuration for the depicted construction. Visit www.durock.com for the latest revisions and contact DuRock for project-specific details to suit conditions other than those depicted. DuRock assumes no liability for the architecture, design, engineering, or workmanship of any project.

InsulROCK

Last revised: Jan 2019

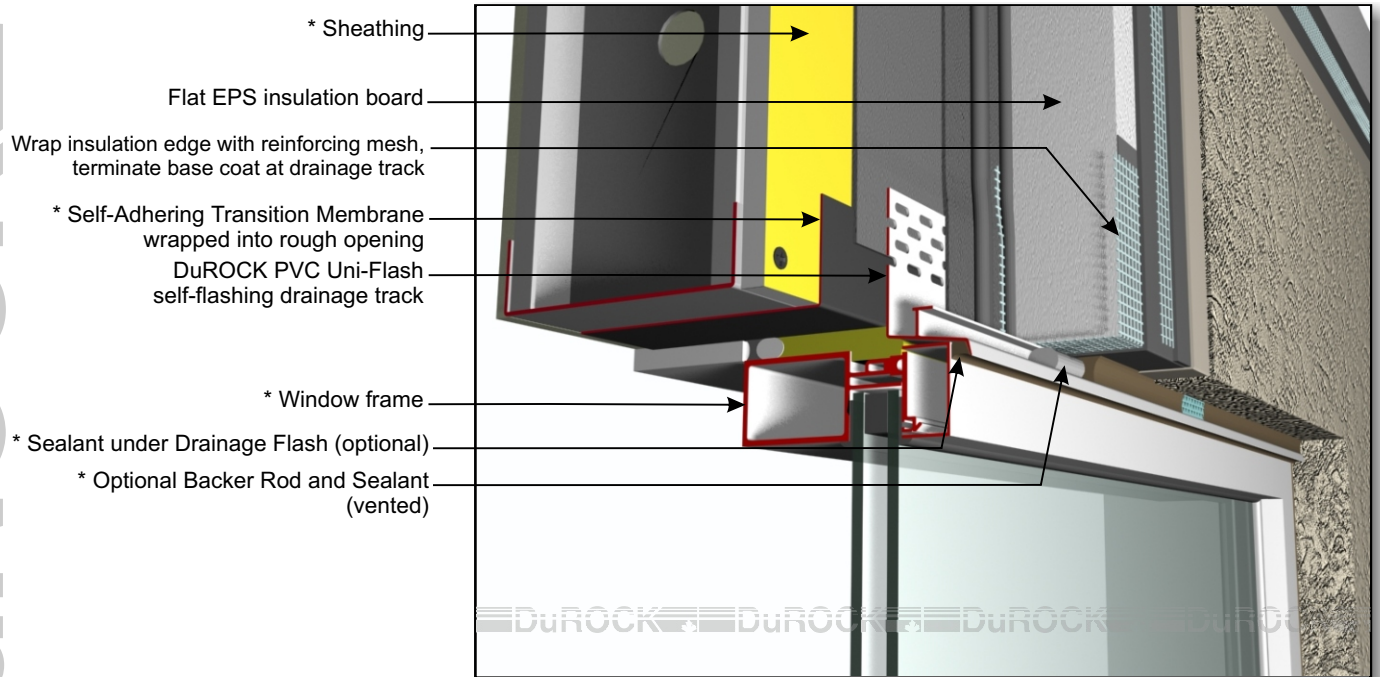
Issued: Mar 2006

COVER

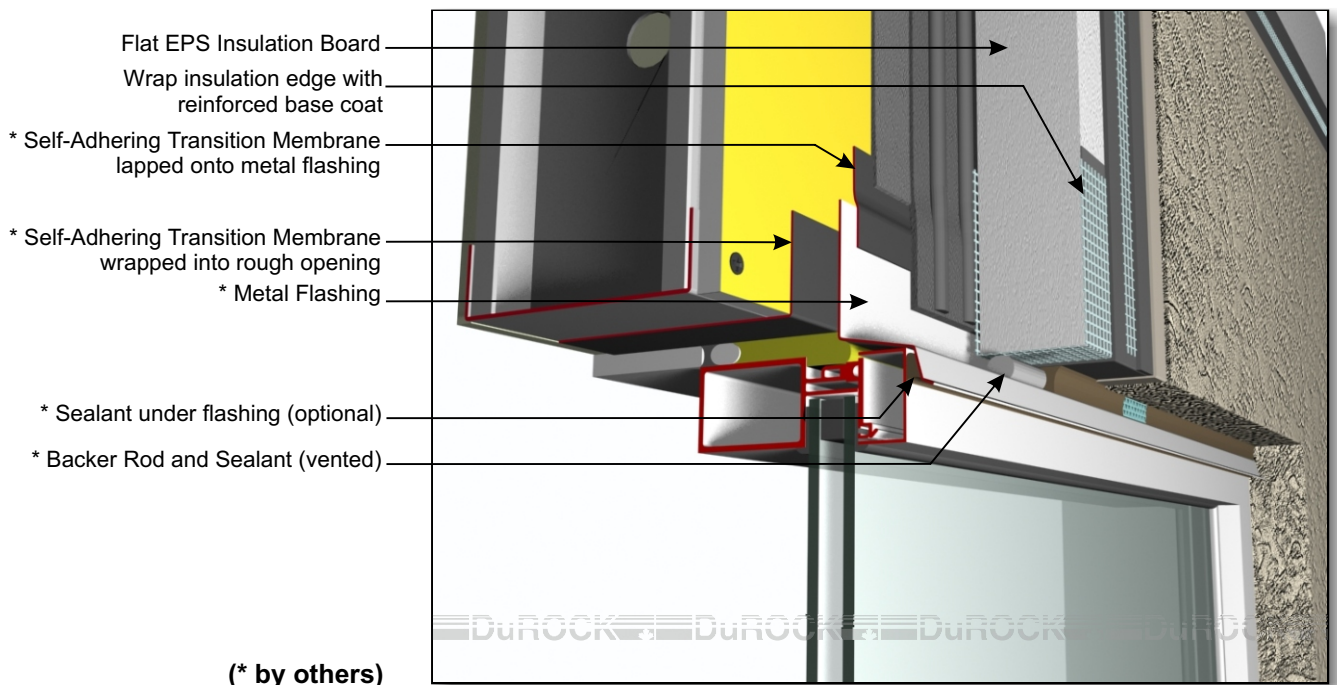
DuROCK InsulROCK EIFS

Exterior Insulation Finish System for Commercial and High Rise Construction

InsulROCK
Exterior Insulation Finish System
CCMC No. 12969-R



D-01, WINDOW HEADER WITH DuROCK UNI-FLASH



D-02, WINDOW HEADER WITH METAL FLASHING

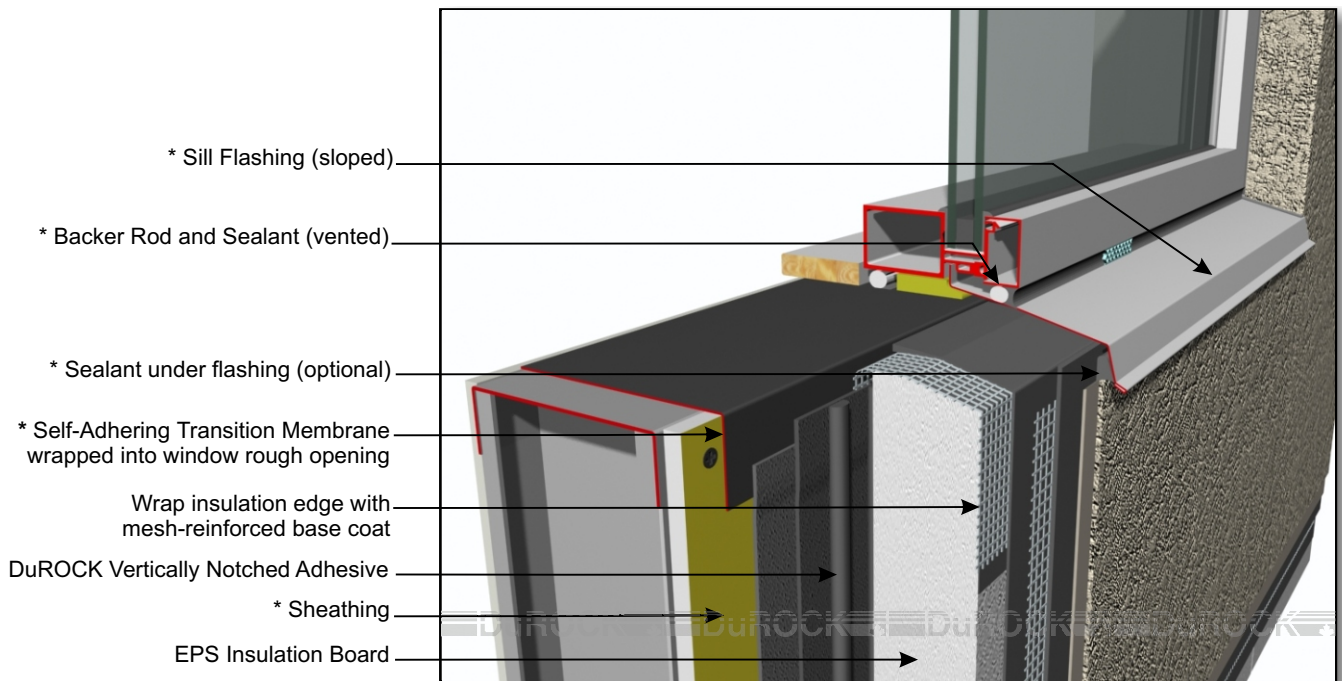
DuROCK InsulROCK EIFS

Exterior Insulation Finish System
for Commercial and High Rise Construction

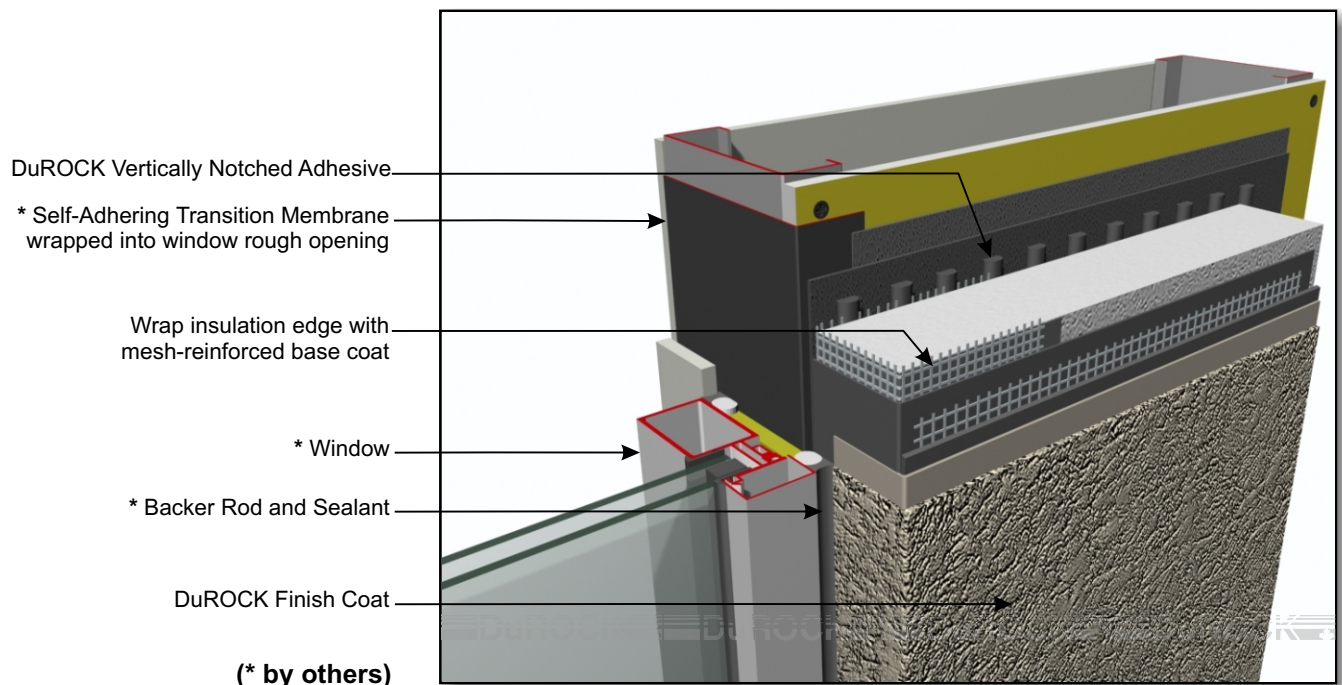
InsulROCK

Exterior Insulation Finish System

CCMC No. 12969-R



D-03, WINDOW SILL DETAIL



D-04, WINDOW JAMB DETAIL



Alfacing International Limited

101 B-ROYTEC ROAD, WOODBRIDGE, ON, L4L 8A9

TEL: (905) 856-0133, FAX: (905) 856-9654

www.durock.com

ARCHITECTURAL FINISHING SYSTEMS

This detail complements the corresponding system specification and illustrates the system configuration for the depicted construction. Visit www.durock.com for the latest revisions and contact DuRock for project-specific details to suit conditions other than those depicted. DuRock assumes no liability for the architecture, design, engineering, or workmanship of any project.

InsulROCK

Last revised: Jan 2019

Issued: Mar 2006

02-06

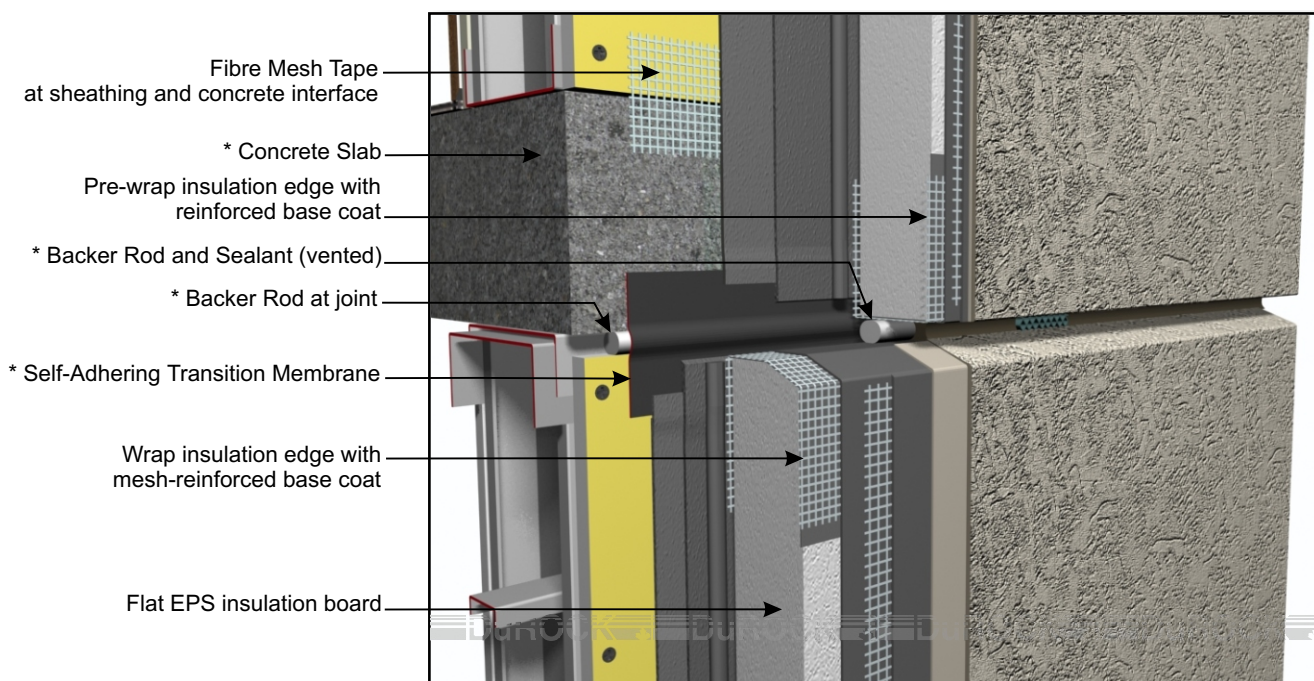
DuROCK InsulROCK EIFS

Exterior Insulation Finish System
for Commercial and High Rise Construction

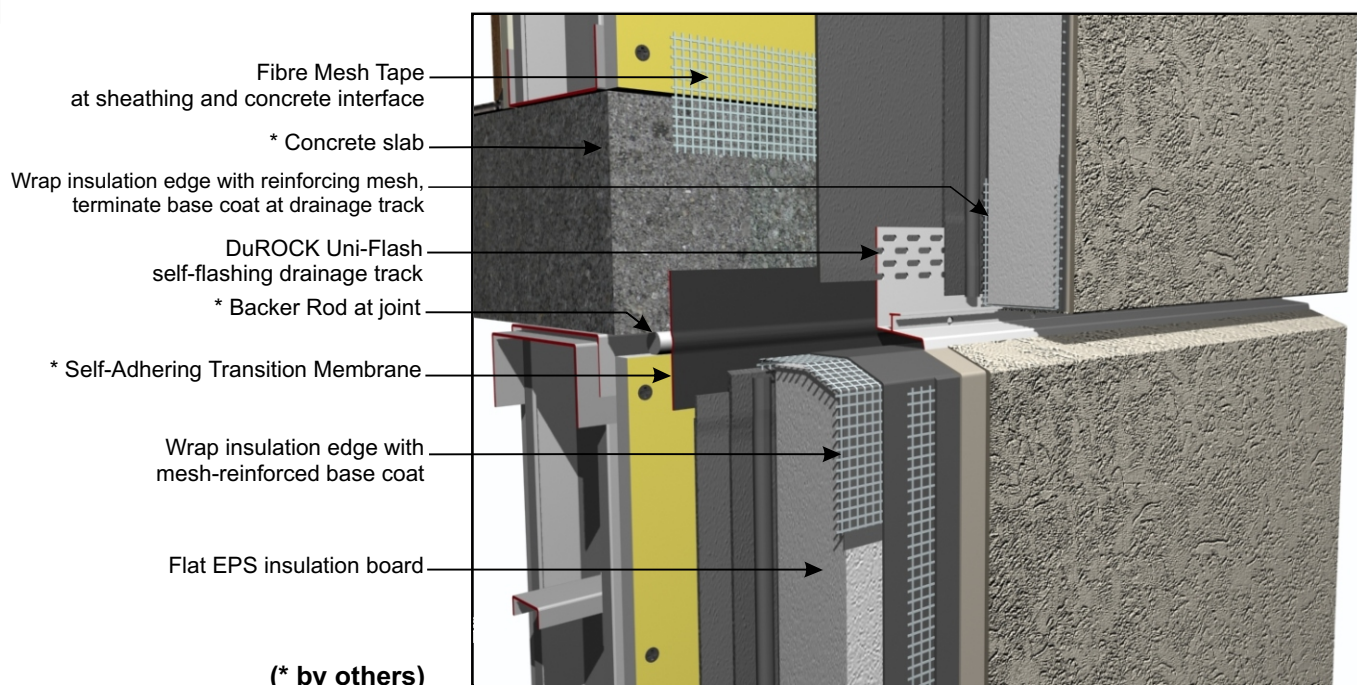
InsulROCK

Exterior Insulation Finish System

CCMC No. 12969-R



D-05, HORIZONTAL EXPANSION JOINT (SEALED OPTION)



D-06, HORIZONTAL EXPANSION JOINT (DRAINED OPTION)

ARCHITECTURAL FINISHING SYSTEMS



Alfacing International Limited

101 B-ROYTEC ROAD, WOODBRIDGE, ON. L4L 8A9

TEL: (905) 856-0133, FAX: (905) 856-9654

www.durock.com

ARCHITECTURAL FINISHING SYSTEMS

This detail complements the corresponding system specification and illustrates the system configuration for the depicted construction. Visit www.durock.com for the latest revisions and contact DuROCK for project-specific details to suit conditions other than those depicted. DuROCK assumes no liability for the architecture, design, engineering, or workmanship of any project.

InsulROCK

Last revised: Jan 2019

Issued: Mar 2006

03-06

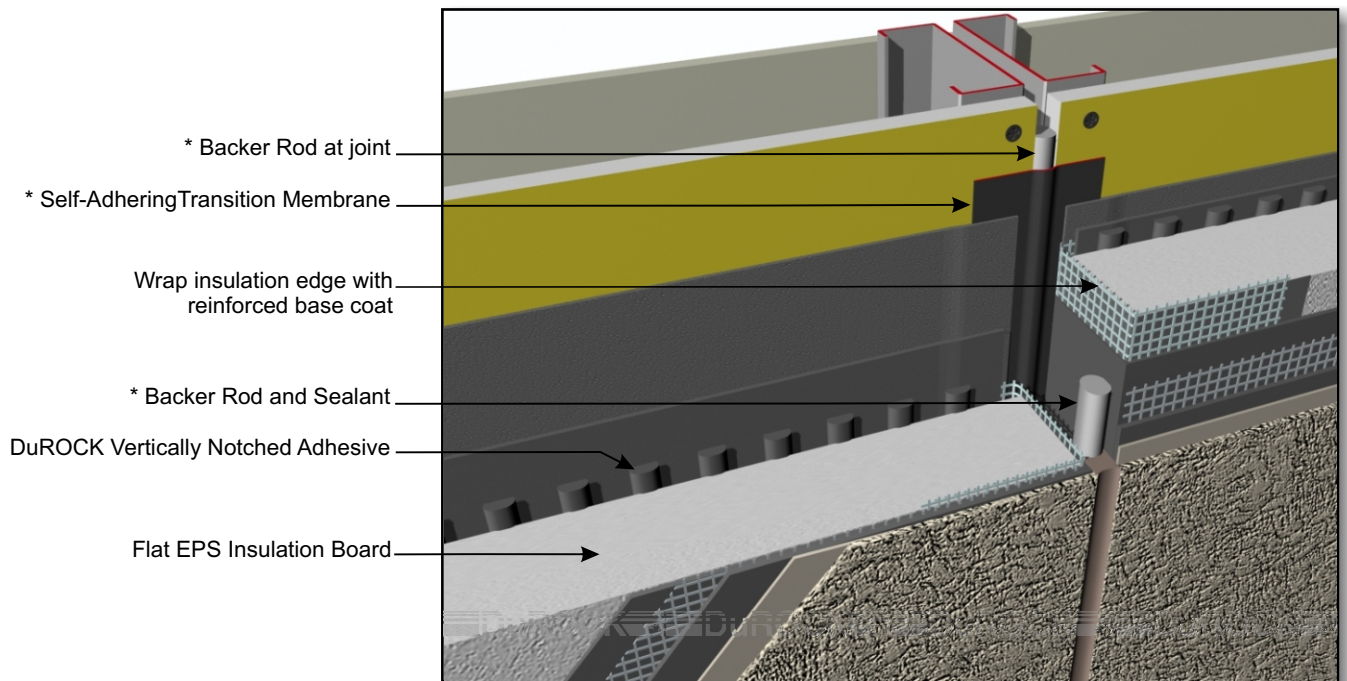
DuROCK InsulROCK EIFS

Exterior Insulation Finish System
for Commercial and High Rise Construction

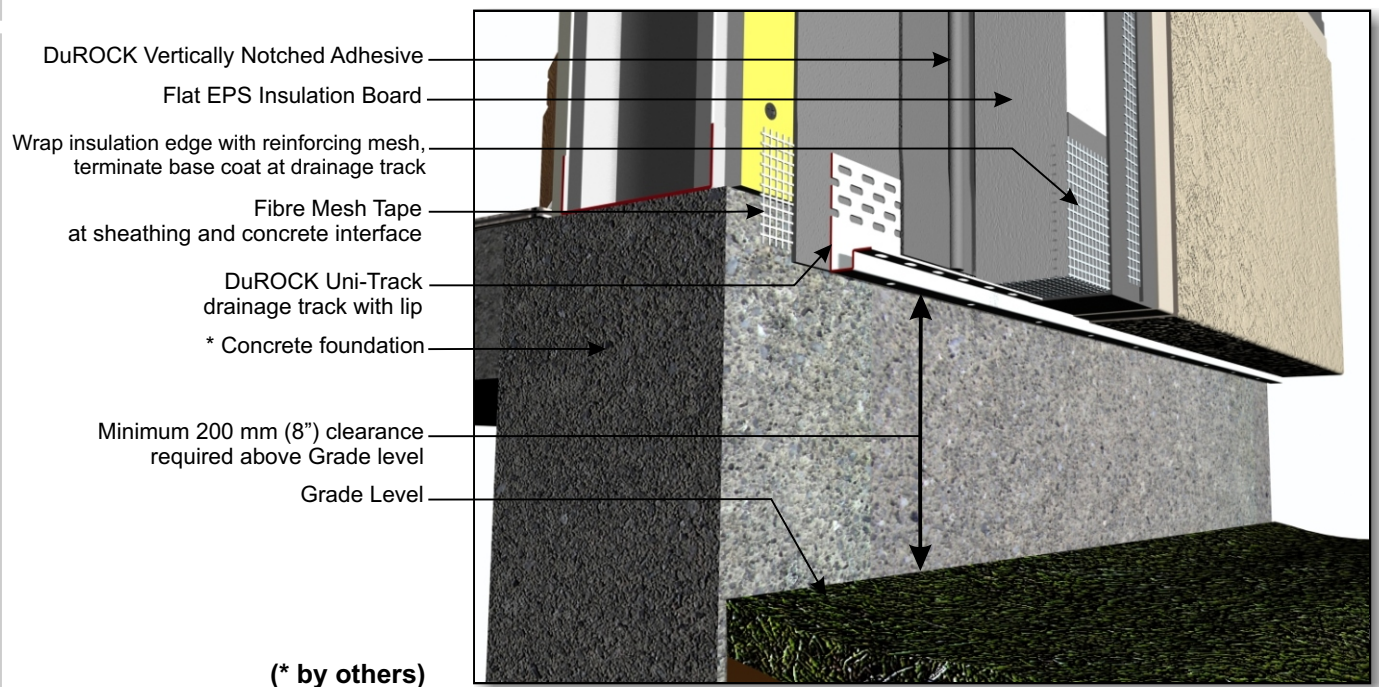
InsulROCK

Exterior Insulation Finish System

CCMC No. 12969-R



D-07, VERTICAL EXPANSION JOINT



D-08, TERMINATION AT GRADE



Alfacing International Limited
101 B-ROYTEC ROAD, WOODBRIDGE, ON. L4L 8A9
TEL: (905) 856-0133, FAX: (905) 856-9654
www.durock.com

ARCHITECTURAL FINISHING SYSTEMS

This detail complements the corresponding system specification and illustrates the system configuration for the depicted construction. Visit www.durock.com for the latest revisions and contact DuRock for project-specific details to suit conditions other than those depicted. DuRock assumes no liability for the architecture, design, engineering, or workmanship of any project.

InsulROCK

Last revised: Jan 2019

Issued: Mar 2006

04-06

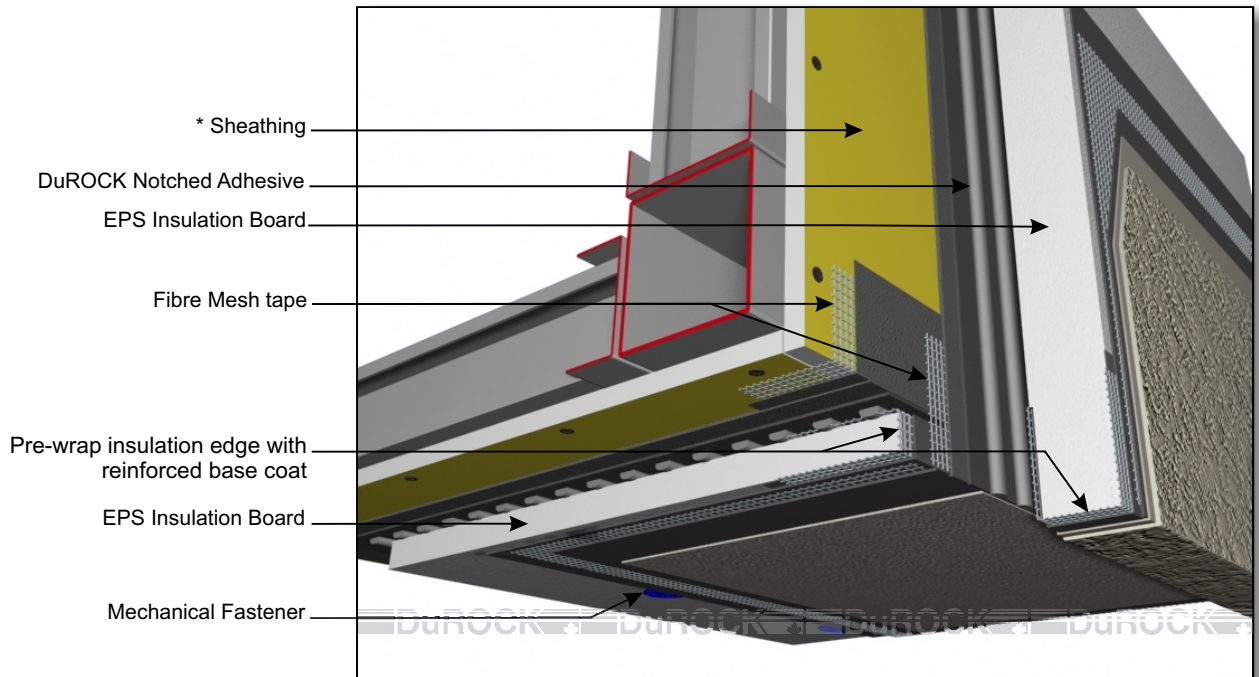
DuROCK InsulROCK EIFS

Exterior Insulation Finish System
for Commercial and High Rise Construction

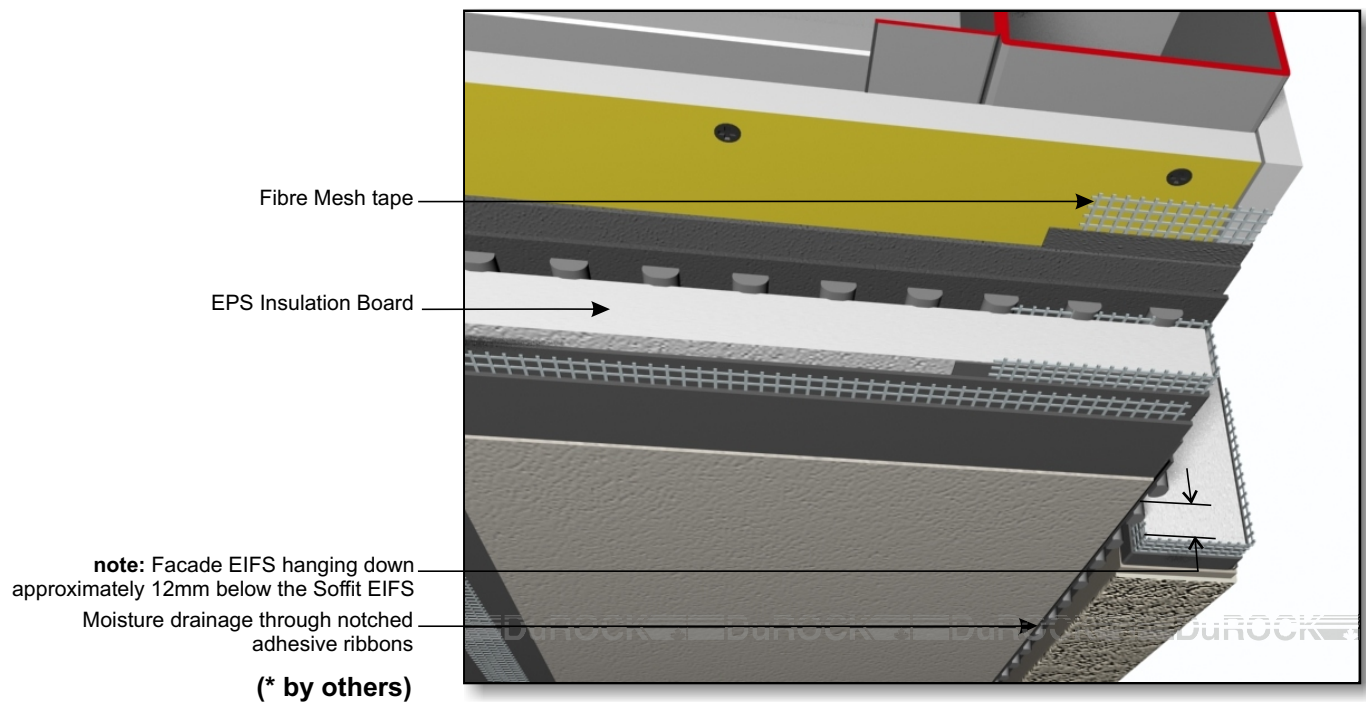
InsulROCK

Exterior Insulation Finish System

CCMC No. 12969-R



D-09, TERMINATION AT EIFS SOFFIT (VIEW A)



D-09A, TERMINATION AT EIFS SOFFIT (VIEW B)



Alfacing International Limited
101 B-ROYTEC ROAD, WOODBRIDGE, ON, L4L 8A9
TEL: (905) 856-0133, FAX: (905) 856-9654
www.durock.com

ARCHITECTURAL FINISHING SYSTEMS

This detail complements the corresponding system specification and illustrates the system configuration for the depicted construction. Visit www.durock.com for the latest revisions and contact DuRock for project-specific details to suit conditions other than those depicted. DuRock assumes no liability for the architecture, design, engineering, or workmanship of any project.

InsulROCK

Last revised: Jan 2019

Issued: Mar 2006

05-06

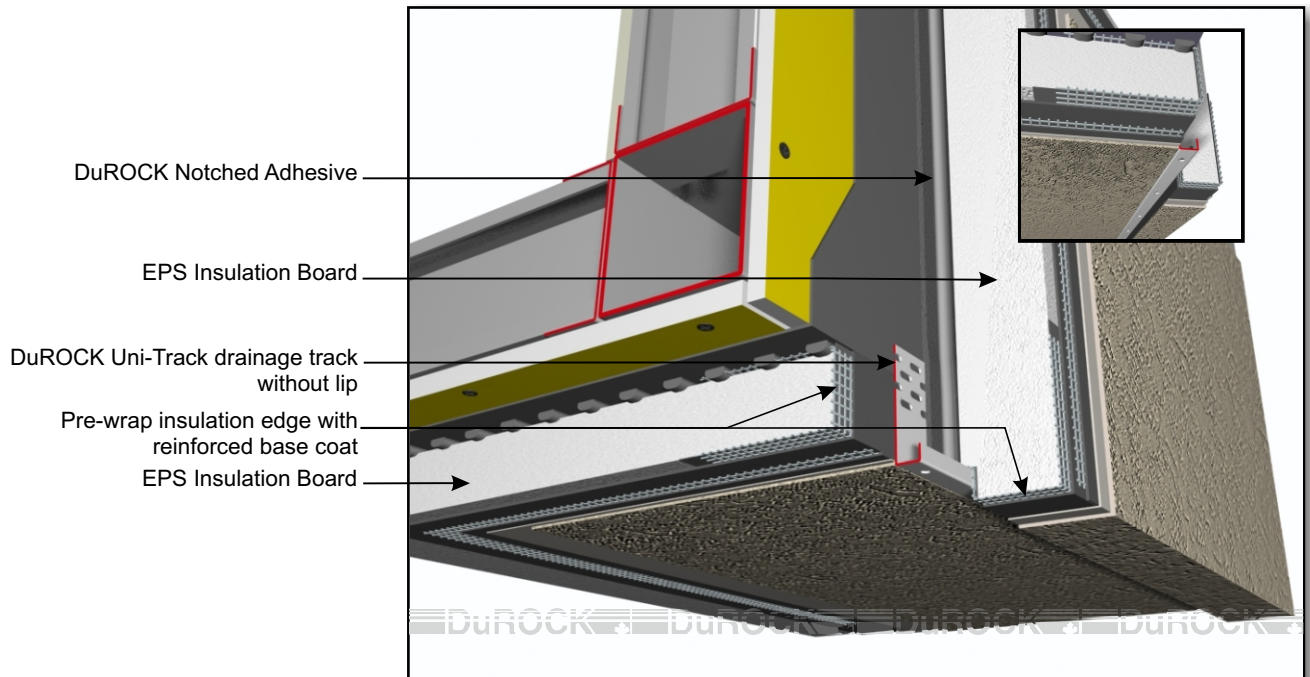
DuROCK InsulROCK EIFS

Exterior Insulation Finish System
for Commercial and High Rise Construction

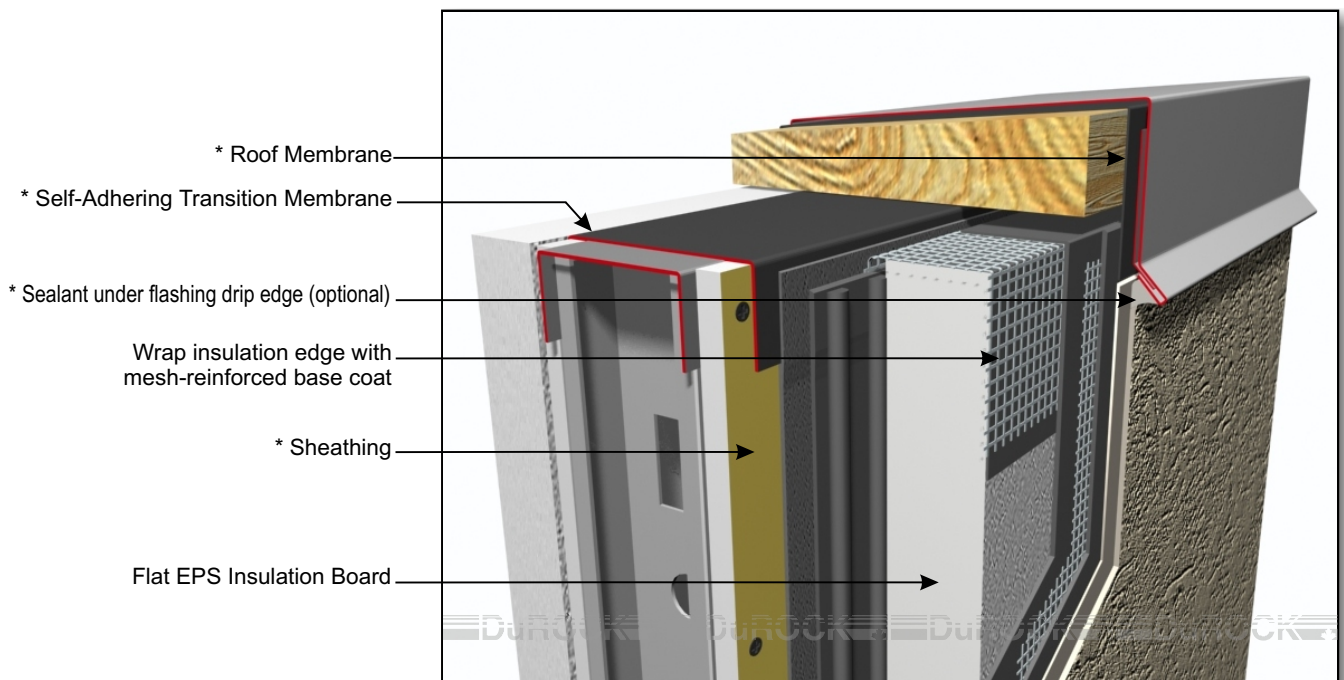
InsulROCK

Exterior Insulation Finish System

CCMC No. 12969-R



D-10, TERMINATION AT EIFS SOFFIT WITH UNI-TRACK



(* by others)

D-11, TERMINATION AT ROOF TOP PARAPET



Alfacing International Limited
101 B-ROYTEC ROAD, WOODBRIDGE, ON, L4L 8A9
TEL: (905) 856-0133, FAX: (905) 856-9654
www.durock.com

ARCHITECTURAL FINISHING SYSTEMS

This detail complements the corresponding system specification and illustrates the system configuration for the depicted construction. Visit www.durock.com for the latest revisions and contact DuRock for project-specific details to suit conditions other than those depicted. DuRock assumes no liability for the architecture, design, engineering, or workmanship of any project.

InsulROCK

Last revised: Jan 2019

Issued: Mar 2006

06-06