

* Sheathing

DuROCK PUCCS,
EPS Insulation Board

DuROCK Reinforcing Mesh
embedded in DuROCK Prep Coat

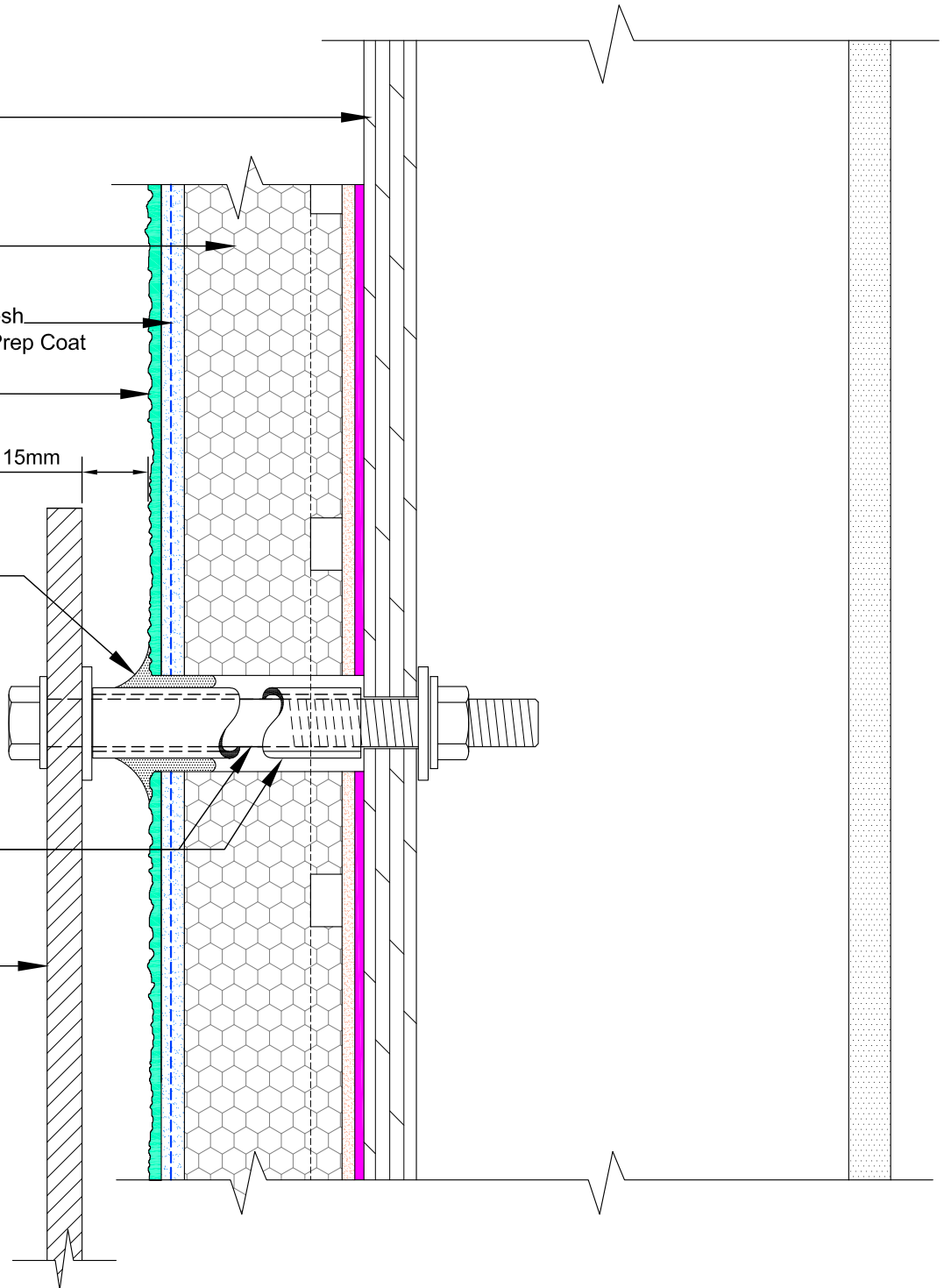
DuROCK Finish Coat

Minimum 15mm

* Natural Cure Sealant

* Corrosion resistant
Lag Screw and Shank

* Signage panel



(* by others)

DuROCK SYSTEM:

PUCCS-CHRC

(FOR COMMERCIAL AND HIGH RISE CONSTRUCTION)

DRAWING TITLE:

SIGNAGE ATTACHMENT

This detail complements the corresponding system specification and illustrates the system configuration for the depicted construction. Visit www.durock.com for the latest revisions and contact DuROCK for project-specific details to suit conditions other than those depicted. DuROCK assumes no liability for the architecture, design, engineering, or workmanship of any project.



Alfacing International Limited

101-B ROYTEC ROAD
WOODBRIDGE, ONTARIO
TEL : (905) 856-0133, FAX : (905) 856-9654
www.durock.com

ARCHITECTURAL FINISHING SYSTEMS

LAST REVISE: JAN 2019

ISSUED: MAR 2007

DRAWN: RIZ

SCALE: NTS

PUCCS-CHRC

D-14