

* Wood Sheathing

DuROCK Roller Bear or Polar Bear Moisture Barrier

DuROCK Polar Bear Moisture Barrier/Adhesive

DuROCK PUCCS, EPS Insulation Board with 10mm (GDDC) Geometrically Defined Drainage Cavity

DuROCK Reinforcing Mesh embedded in DuROCK Prep Coat

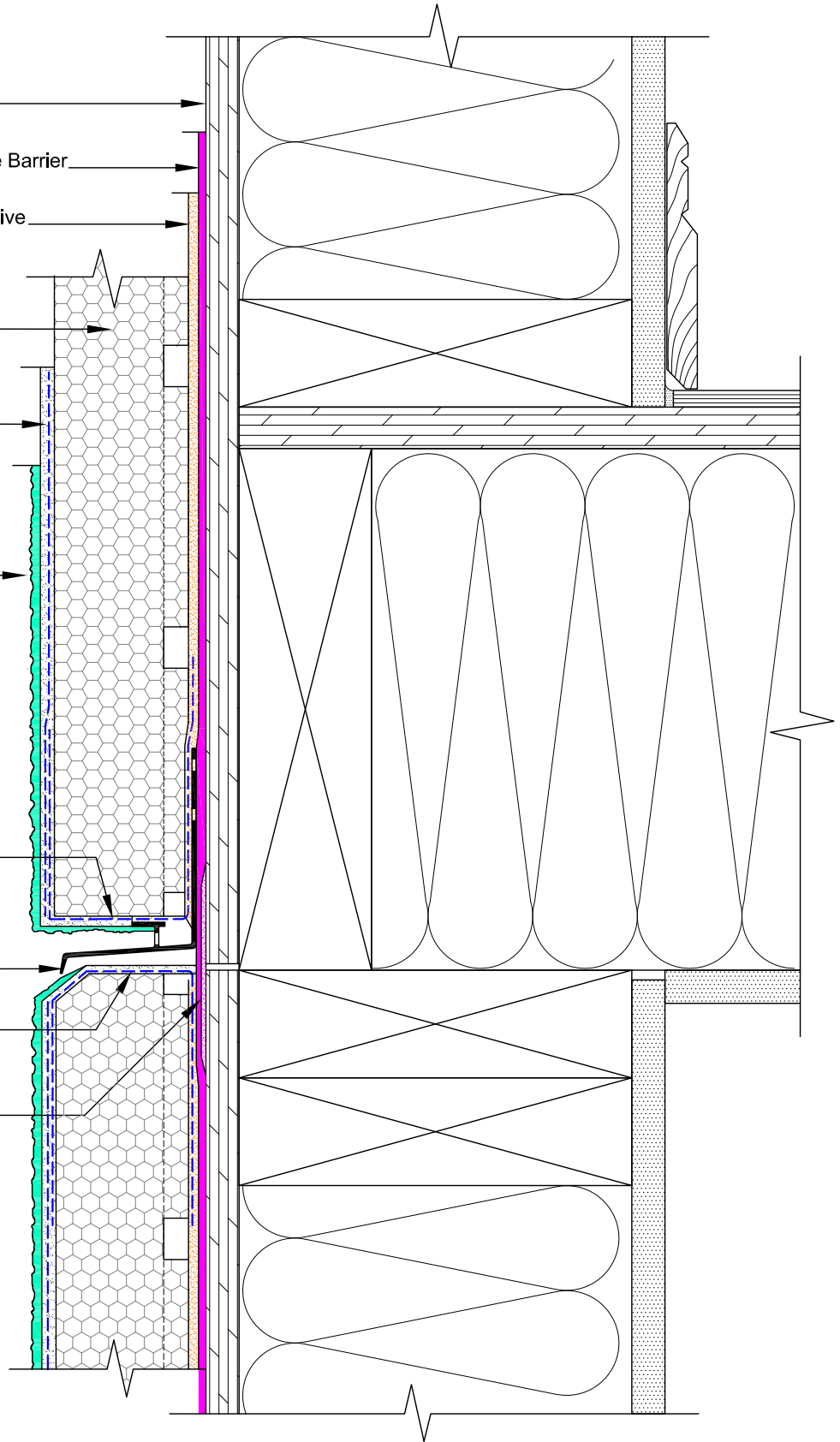
DuROCK Finish Coat

Wrap insulation edge with reinforcing mesh, terminate base coat at drainage track

DuROCK Uni-Flash, self-flashing drainage track

Wrap insulation edge with mesh-reinforced base coat

DuROCK Polar Bear joint treatment



(* by others)

DuROCK SYSTEM:

PUCCS-LLRC

(FOR LOW-RISE RESIDENTIAL CONSTRUCTION)

DRAWING TITLE:

**HORIZONTAL EXPANSION JOINT
(DRAINED OPTION)**

This detail complements the corresponding system specification and illustrates the system configuration for the depicted construction. Visit www.durock.com for the latest revisions and contact DuROCK for project-specific details to suit conditions other than those depicted. DuROCK assumes no liability for the architecture, design, engineering, or workmanship of any project.

DuROCK

Alfacing International Limited

101-B ROYTEC ROAD
WOODBRIDGE, ONTARIO
TEL : (905) 856-0133, FAX : (905) 856-9654
www.durock.com

ARCHITECTURAL FINISHING SYSTEMS

LAST REVISE: JAN 2019

ISSUED: MAR 2007

DRAWN: RIZ

SCALE: NTS

PUCCS-LLRC

D-08