



Pressure-Utilized Compartmented Cavity System

CCMC No. 12969-R

\* Wood Sheathing

DuROCK Roller Bear or Polar Bear  
Moisture Barrier

DuROCK Polar Bear Moisture Barrier/Adhesive

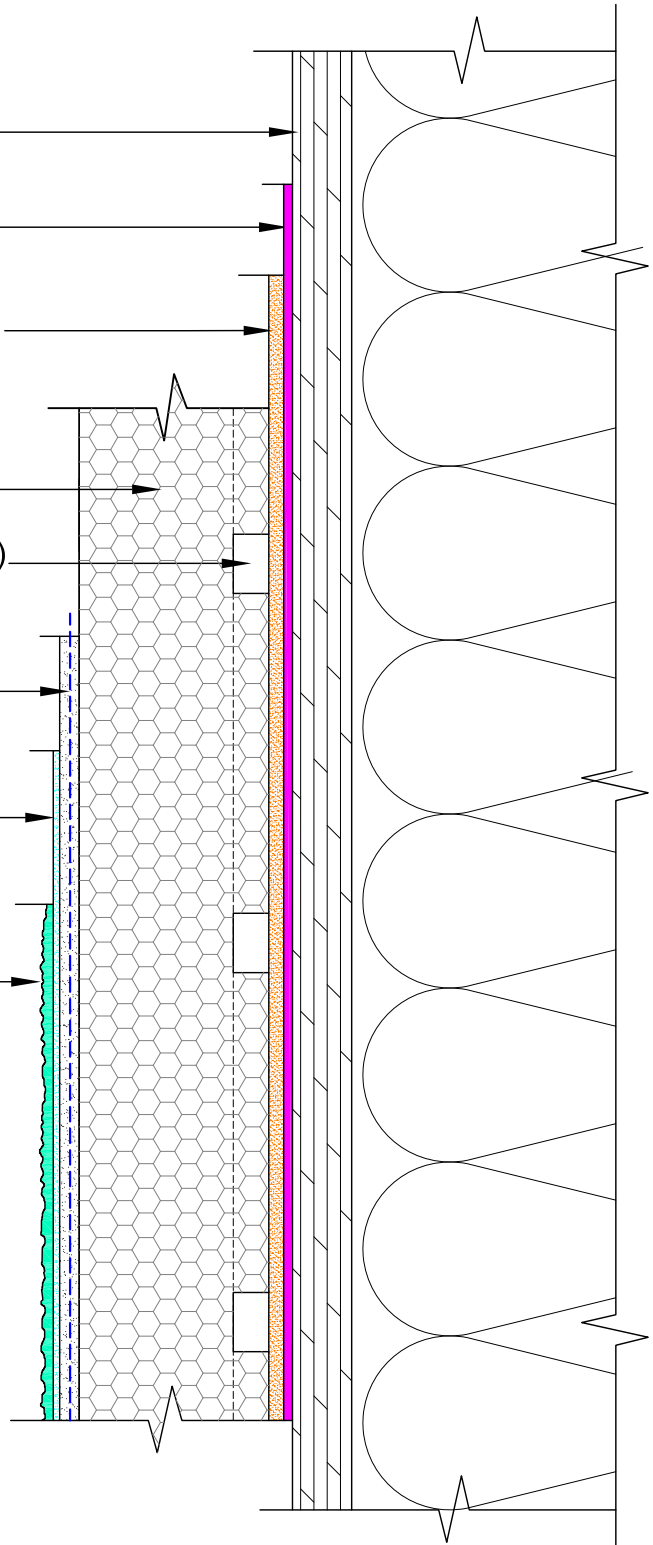
DuROCK PUGCS, EPS Insulation Board

Geometrically Defined Drainage Cavity (GDCC)  
at the back of insulation board

DuROCK 5oz. Reinforcing Fibre Mesh  
embedded in Prep Coat

DuROCK Base Primer (optional)

DuROCK Finish Coat



(\* by others)

DuROCK SYSTEM:

**PUGCS-LLRC**

(FOR LOW-RISE RESIDENTIAL CONSTRUCTION)

DRAWING TITLE:

**STANDARD SECTION DETAIL**

This detail complements the corresponding system specification and illustrates the system configuration for the depicted construction. Visit [www.durock.com](http://www.durock.com) for the latest revisions and contact DuROCK for project-specific details to suit conditions other than those depicted. DuROCK assumes no liability for the architecture, design, engineering, or workmanship of any project.



Alfacing International Limited

101-B ROYTEC ROAD  
WOODBRIDGE, ONTARIO  
TEL : (905) 856-0133, FAX : (905) 856-9654  
[www.durock.com](http://www.durock.com)

ARCHITECTURAL FINISHING SYSTEMS

LAST REVISION: JAN 2019

ISSUED: MAR 2007

DRAWN: RIZ

SCALE: NTS

**PUGCS-LLRC  
COVER**