

\* Sheathing

DuROCK Moisture Barrier

DuROCK Moisture Barrier/Adhesive

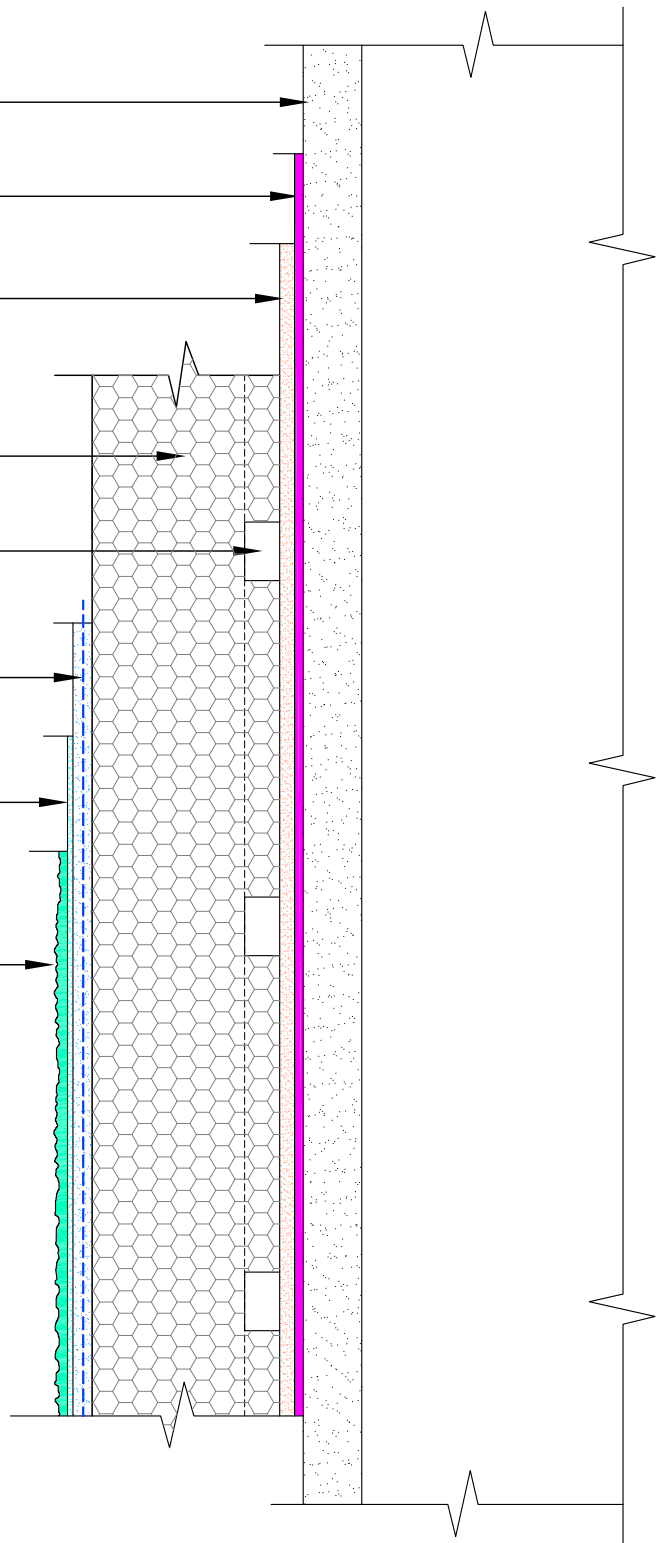
DuROCK PUCCS, EPS Insulation Board

10mm (GDDC) Geometrically Defined Drainage Cavity at the back of insulation board

DuROCK 5oz. Reinforcing Mesh embedded in Prep Coat

DuROCK Base Primer (optional)

DuROCK Finish Coat



**CCMC No. 12969-R**

PUCCS is continuous insulation cladding that includes a Geometrically Defined Drainage Cavity (GDDC) that is 10 mm deep and 37% open. PUCCS has been evaluated by CCMC for compliance with the National Building Code of Canada, PUCCS complies with the CAN/ULC-S716.1 EIFS Materials and Systems test standard, and PUCCS satisfies the fire protection test requirements in National Building Code of Canada Article 3.1.5.5 when tested in accordance with CAN/ULC-S134 and in Article 3.2.3.8 when tested in accordance with CAN/ULC-S101

(\* by others)

DuROCK SYSTEM:

### PUCCS-CHRC

(FOR COMMERCIAL AND HIGH RISE CONSTRUCTION)

DRAWING TITLE:

## STANDARD SECTION DETAIL

This detail complements the corresponding system specification and illustrates the system configuration for the depicted construction. Visit [www.durock.com](http://www.durock.com) for the latest revisions and contact DuROCK for project-specific details to suit conditions other than those depicted. DuROCK assumes no liability for the architecture, design, engineering, or workmanship of any project.



Alfacing International Limited

101-B ROYTEC ROAD  
WOODBRIDGE, ONTARIO  
TEL : (905) 856-0133, FAX : (905) 856-9654  
[www.durock.com](http://www.durock.com)

ARCHITECTURAL FINISHING SYSTEMS

LAST REVISE: JAN 2019

ISSUED: MAR 2007

DRAWN: RIZ

SCALE: NTS

PUCCS-CHRC

# D-01