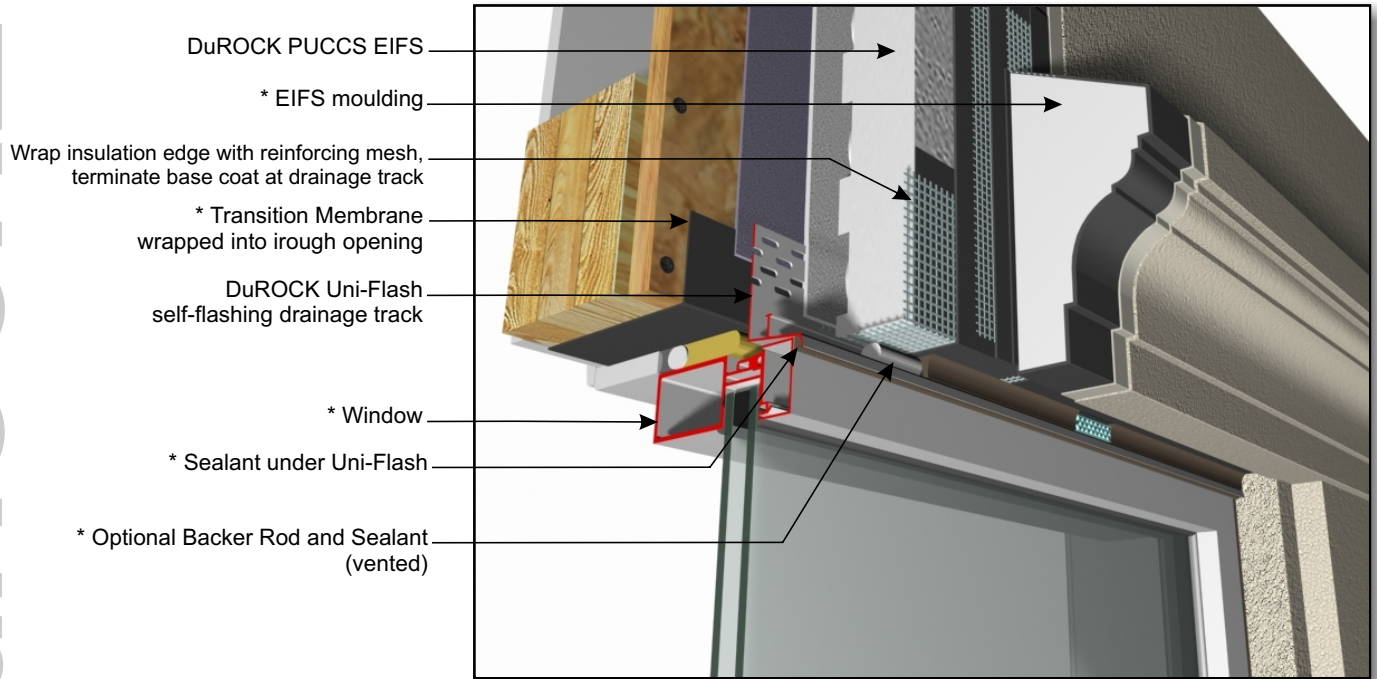


# DuROCK PUCCS EIFS

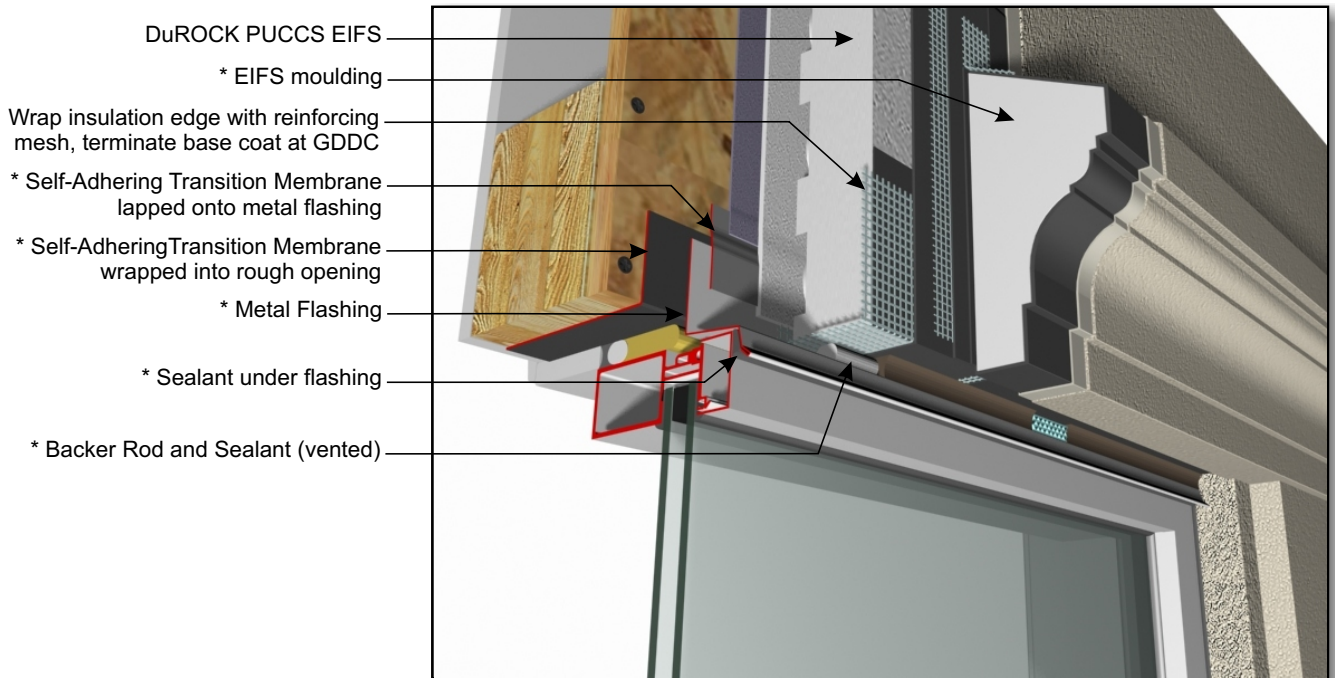
## Exterior Insulation Finish System for Low Rise Residential Construction

**DuROCK**  
 ARCHITECTURAL FINISHING SYSTEMS



- DuROCK PUCCS EIFS
- \* EIFS moulding
- Wrap insulation edge with reinforcing mesh, terminate base coat at drainage track
- \* Transition Membrane wrapped into rough opening
- DuROCK Uni-Flash self-flashing drainage track
- \* Window
- \* Sealant under Uni-Flash
- \* Optional Backer Rod and Sealant (vented)

**PUCCS LRRC (01)**  
WINDOW HEADER WITH DuROCK PVC UNI-FLASH



- DuROCK PUCCS EIFS
- \* EIFS moulding
- Wrap insulation edge with reinforcing mesh, terminate base coat at GDCC
- \* Self-Adhering Transition Membrane lapped onto metal flashing
- \* Self-Adhering Transition Membrane wrapped into rough opening
- \* Metal Flashing
- \* Sealant under flashing
- \* Backer Rod and Sealant (vented)

(\* by others)

**PUCCS-LRRC (02)**  
WINDOW HEADER WITH METAL FLASHING