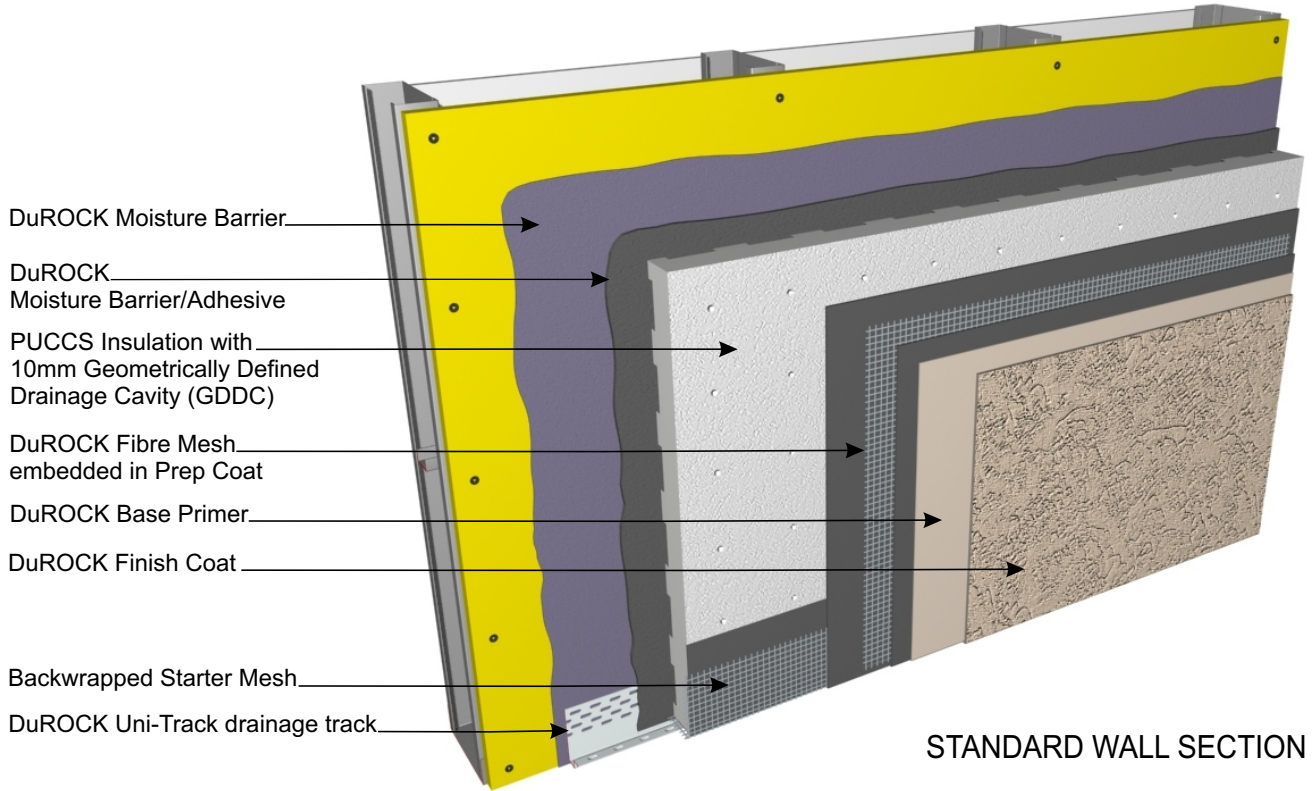


DuROCK PUCCS EIFS

Exterior Insulation Finish System
for Commercial and High Rise Construction



DuROCK
 ARCHITECTURAL FINISHING SYSTEMS

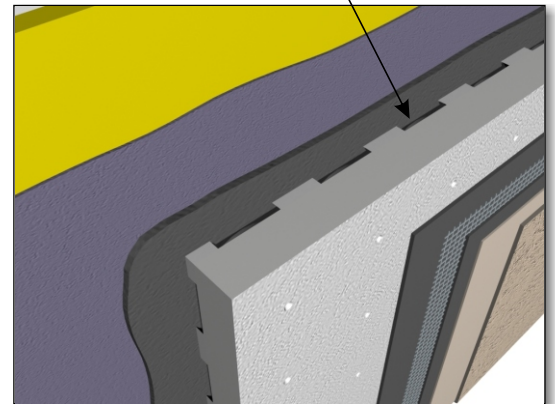


STANDARD WALL SECTION

PUCCS is continuous insulation cladding that includes a Geometrically Defined Drainage Cavity (GDDC) that is 10 mm deep and 37% open. PUCCS has been evaluated by CCMC for compliance with the National Building Code of Canada, PUCCS complies with the CAN/ULC-S716.1 EIFS Materials and Systems test standard, and PUCCS satisfies the fire protection test requirements in National Building Code of Canada Article 3.1.5.5 when tested in accordance with CAN/ULC-S134 and in Article 3.2.3.8 when tested in accordance with CAN/ULC-S101

For clarity of illustration all details depict Roller Bear as the first coat moisture barrier and Cement Bear as the second coat moisture barrier. Please refer to the following page for alternative moisture barrier combinations.

Moisture drainage through 10mm Geometrically Defined Drainage Cavity (GDDC)



Alfacing International Limited
 101 B.ROYTEC ROAD, WOODBRIDGE, ON, L4L 8A9
 TEL: (905) 856-0133, FAX: (905) 856-9654
www.durock.com

ARCHITECTURAL FINISHING SYSTEMS

This detail complements the corresponding system specification and illustrates the system configuration for the depicted construction. Visit www.durock.com for the latest revisions and contact DuRock for project-specific details to suit conditions other than those depicted. DuRock assumes no liability for the architecture, design, engineering, or workmanship of any project.

PUCCS-CHRC

Last revise: Mar 2017

Issued: Mar 2006

COVER