

* Wood Sheathing

DuROCK Roller Bear or Polar Bear Moisture Barrier

DuROCK Polar Bear Air/Moisture Barrier/Adhesive

DuROCK PUCCS Insulation
with 10mm Geometrically Defined
Drainage Cavity (GDDC)

DuROCK Fibre Mesh
embedded in DuROCK Prep Coat

DuROCK Finish Coat

Wrap insulation edge with
reinforcing mesh,
terminate base coat at drainage track

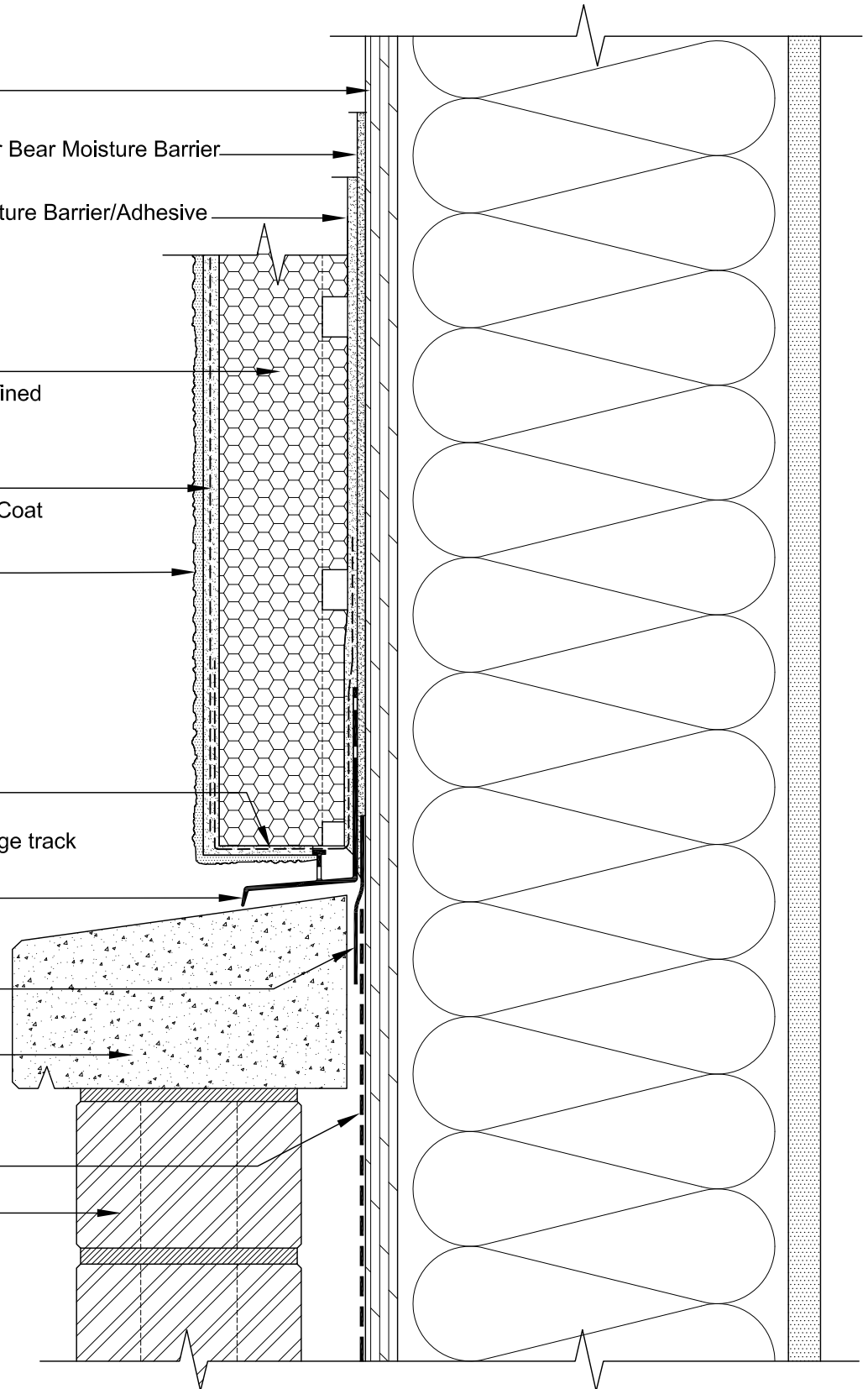
DuROCK Uni-Flash
self-flashing drainage track

* Self-Adhering
Transition Membrane

* Concrete Sill

* Sheathing Membrane

* Brick Cladding



(* by others)

PUCCS-LRRC
(FOR LOW-RISE RESIDENTIAL CONSTRUCTION)

DRAWING TITLE:

**TERMINATION AT CONCRETE SILL
WITH DuROCK PVC UNI-FLASH**

This detail complements the corresponding system specification and illustrates the system configuration for the depicted construction. Visit www.durock.com for the latest revisions and contact DuROCK for project-specific details to suit conditions other than those depicted. DuROCK assumes no liability for the architecture, design, engineering, or workmanship of any project.

DuROCK
Alfacing International Limited
101-B ROYTEC ROAD
WOODBIDGE, ONTARIO
TEL : (905) 856-0133, FAX : (905) 856-9654
www.durock.com
ARCHITECTURAL FINISHING SYSTEMS

LAST REVISION: MAR 2017
ISSUED: MAR 2007
DRAWN BY: RIZ
SCALE: NTS
PUCCS-LRRC
D13