

* Wood Sheathing

DuROCK Roller Bear or Polar Bear Moisture Barrier

DuROCK Polar Bear Air/Moisture Barrier/Adhesive

DuROCK PUCCS Insulation
with 10mm Geometrically Defined
Drainage Cavity (GDCC)

DuROCK Fibre Mesh
embedded in DuROCK Prep Coat

DuROCK Finish Coat

* Self-Adhering Transition Membrane
lapped onto metal flashing

Wrap insulation edge with reinforcing mesh,
terminate base coat at GDCC

* Backer Rod and Sealant (vented)

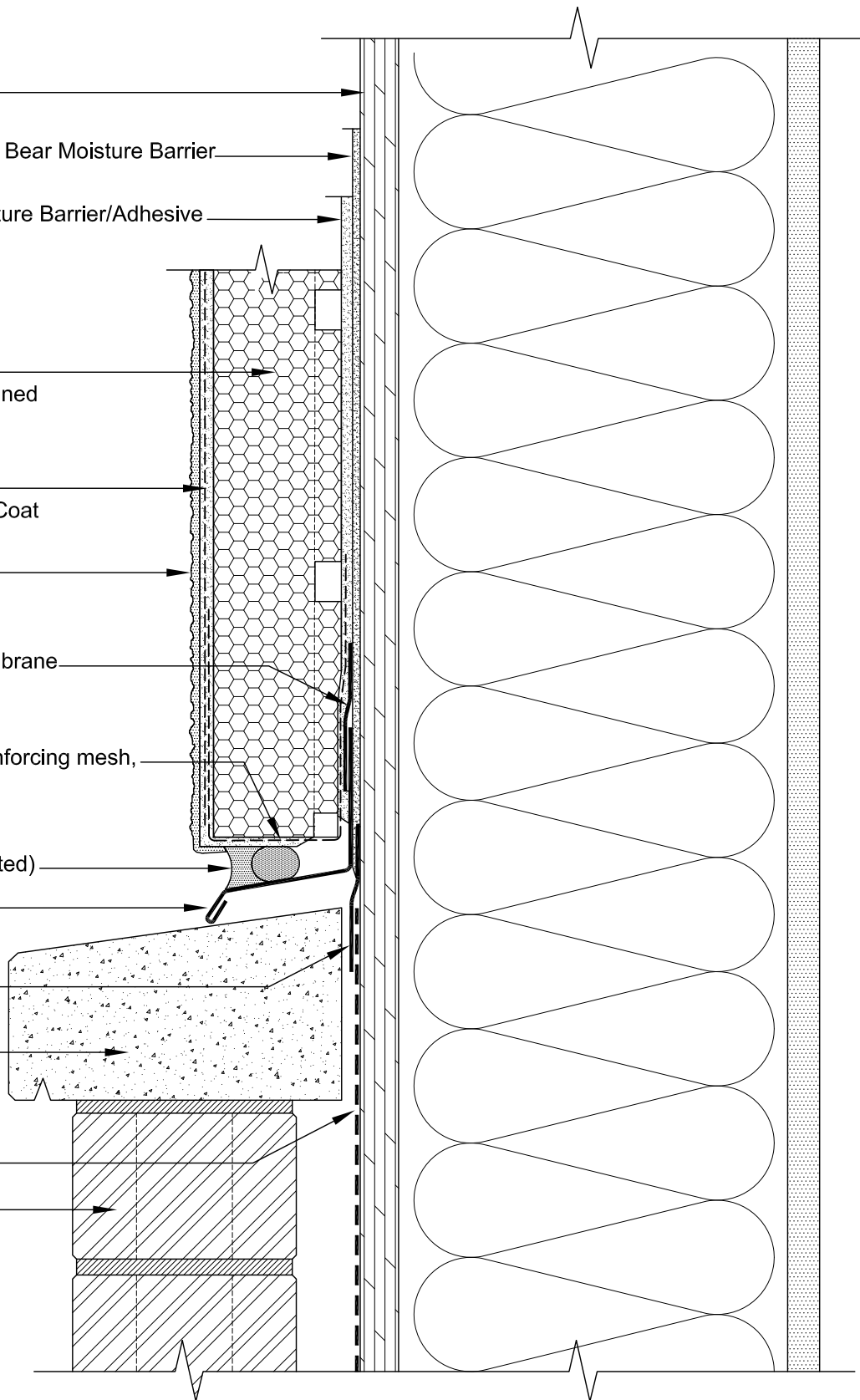
* Metal Flashing

* Self-Adhering
Transition Membrane

* Concrete Sill

* Sheathing Membrane

* Brick Cladding



(* by others)

PUCCS-LRRC
(FOR LOW-RISE RESIDENTIAL CONSTRUCTION)

DRAWING TITLE:

**TERMINATION AT CONCRETE SILL
WITH METAL FLASHING**

This detail complements the corresponding system specification and illustrates the system configuration for the depicted construction. Visit www.durock.com for the latest revisions and contact DuROCK for project-specific details to suit conditions other than those depicted. DuROCK assumes no liability for the architecture, design, engineering, or workmanship of any project.

DuROCK
Alfacing International Limited
101-B ROYTEC ROAD
WOODBRIDGE, ONTARIO
TEL : (905) 856-0133, FAX : (905) 856-9654
www.durock.com
ARCHITECTURAL FINISHING SYSTEMS

LAST REVISION: MAR 2017
ISSUED: MAR 2007
DRAWN BY: RIZ
SCALE: NTS
PUCCS-LRRC
D12