

* Wood Blocking
 * Self-Adhering
 Transition Membrane

* Metal Cap Flashing

Backwrapped Starter Mesh

* Sealant under flashing

DuROCK Finish Coat

DuROCK Fibre Mesh
 embedded in Prep Coat

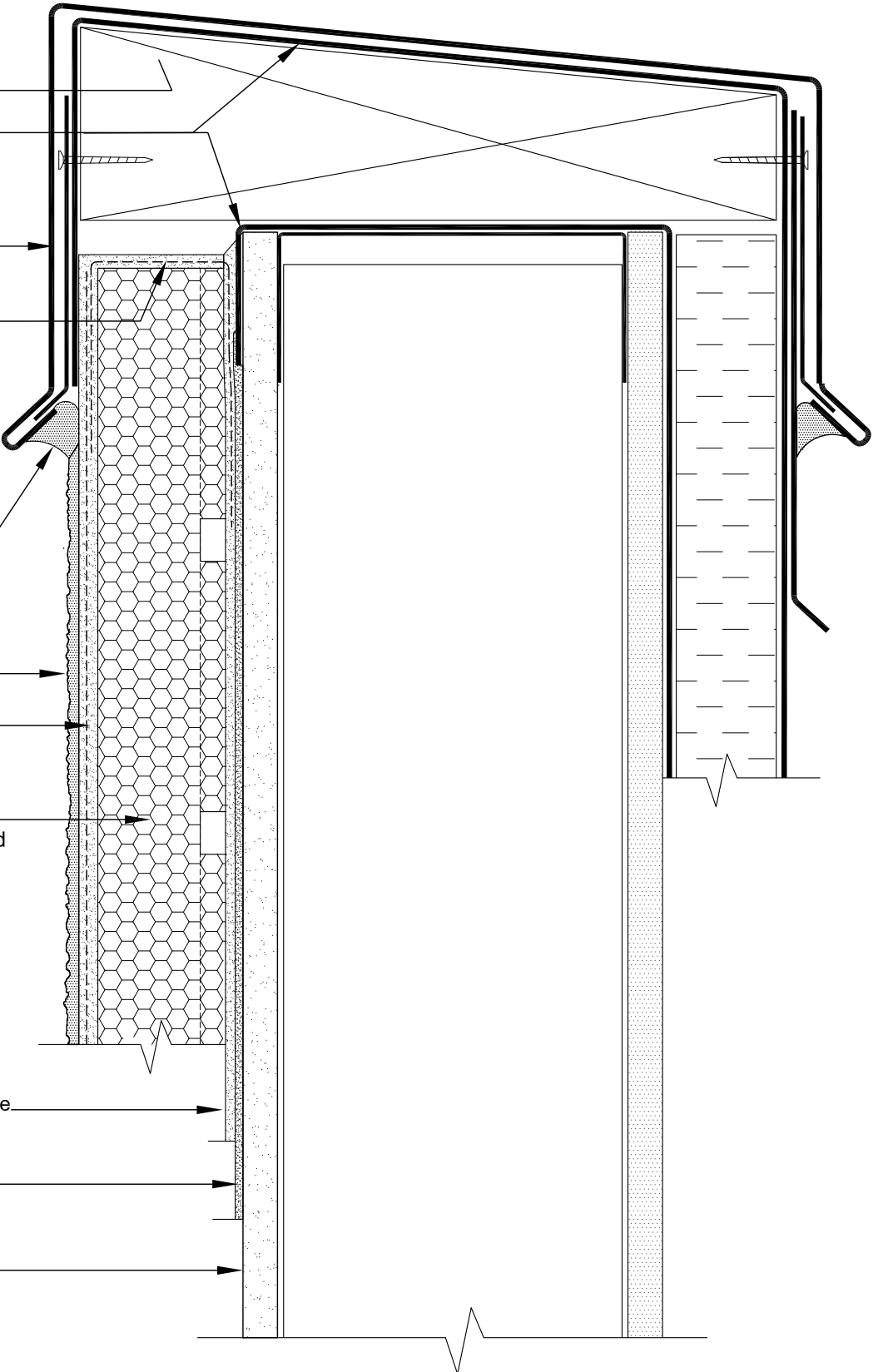
DuROCK PUCCS Insulation
 with 10mm Geometrically Defined
 Drainage Cavity (GDDC)

DuROCK Moisture Barrier/Adhesive

DuROCK Moisture Barrier

* Sheathing

(* by others)



PUCCS-CHRC
 (FOR COMMERCIAL AND HIGH RISE CONSTRUCTION)

DRAWING TITLE:

**TERMINATION AT
 ROOF TOP PARAPET**

This detail complements the corresponding system specification and illustrates the system configuration for the depicted construction. Visit www.durock.com for the latest revisions and contact DuROCK for project-specific details to suit conditions other than those depicted. DuROCK assumes no liability for the architecture, design, engineering, or workmanship of any project.

DuROCK

Alfacing International Limited

101-B ROYTEC ROAD
 WOODBRIDGE, ONTARIO
 TEL : (905) 856-0133, FAX : (905) 856-9654
www.durock.com

ARCHITECTURAL FINISHING SYSTEMS

LAST REVISE: MAR 2017

ISSUED: MAY 2007

DRAWN BY: RIZ

SCALE: NTS

PUCCS-CHRC

D11