

\* Wood Sheathing

DuROCK Roller Bear or Polar Bear Moisture Barrier

DuROCK Polar Bear Moisture Barrier/Adhesive

DuROCK PUCCS Insulation  
with 10mm Geometrically Defined  
Drainage Cavity (GDDC)

DuROCK Fibre Mesh embedded  
in DuROCK Prep Coat

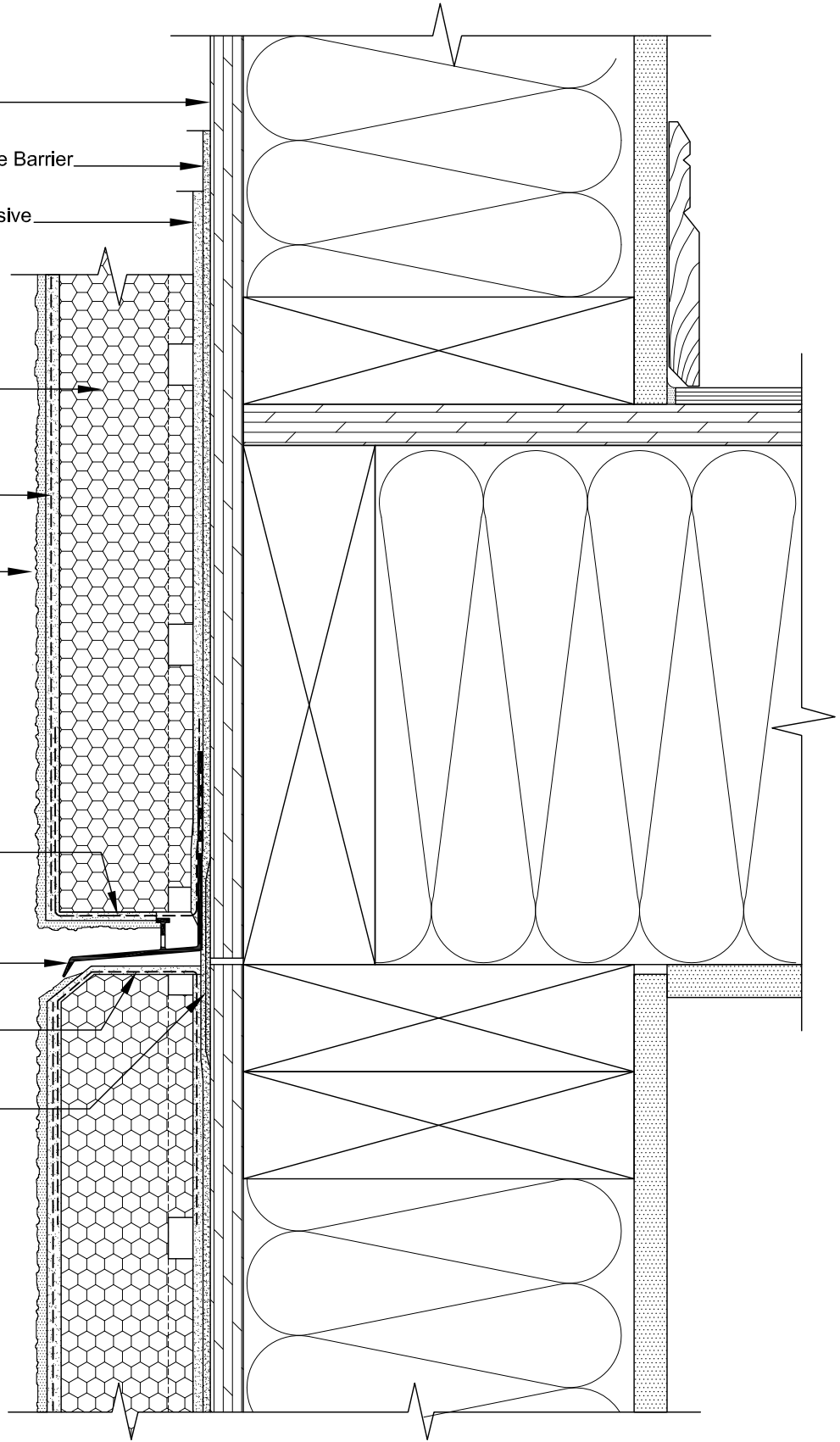
DuROCK Finish Coat

Wrap insulation edge with  
reinforcing mesh,  
terminate base coat at drainage track

DuROCK Uni-Flash,  
self-flashing drainage track

Wrap insulation edge with  
mesh-reinforced base coat

DuROCK Polar Bear joint treatment



(\* by others)

**PUCCS-LRRC**  
(FOR LOW-RISE RESIDENTIAL CONSTRUCTION)

DRAWING TITLE:

**HORIZONTAL EXPANSION JOINT  
(DRAINED)**

This detail complements the corresponding system specification and illustrates the system configuration for the depicted construction. Visit [www.durock.com](http://www.durock.com) for the latest revisions and contact DuROCK for project-specific details to suit conditions other than those depicted. DuROCK assumes no liability for the architecture, design, engineering, or workmanship of any project.

**DuROCK**  
 Alfacing International Limited  
 101-B ROYTEC ROAD  
 WOODBRIDGE, ONTARIO  
 TEL : (905) 856-0133, FAX : (905) 856-9654  
[www.durock.com](http://www.durock.com)  
 ARCHITECTURAL FINISHING SYSTEMS

LAST REVISE: MAR 2017  
 ISSUED: MAR 2007  
 DRAWN BY: RIZ  
 SCALE: NTS  
**PUCCS-LRRC**  
**D06**