

\* Sheathing

DuROCK Moisture Barrier

DuROCK Moisture Barrier/Adhesive

DuROCK PUCCS Insulation  
with 10mm Geometrically Defined  
Drainage Cavity (GDDC)

DuROCK Fibre Mesh embedded in  
DuROCK Prep Coat

DuROCK Finish Coat

Back-wrapped Starter Mesh

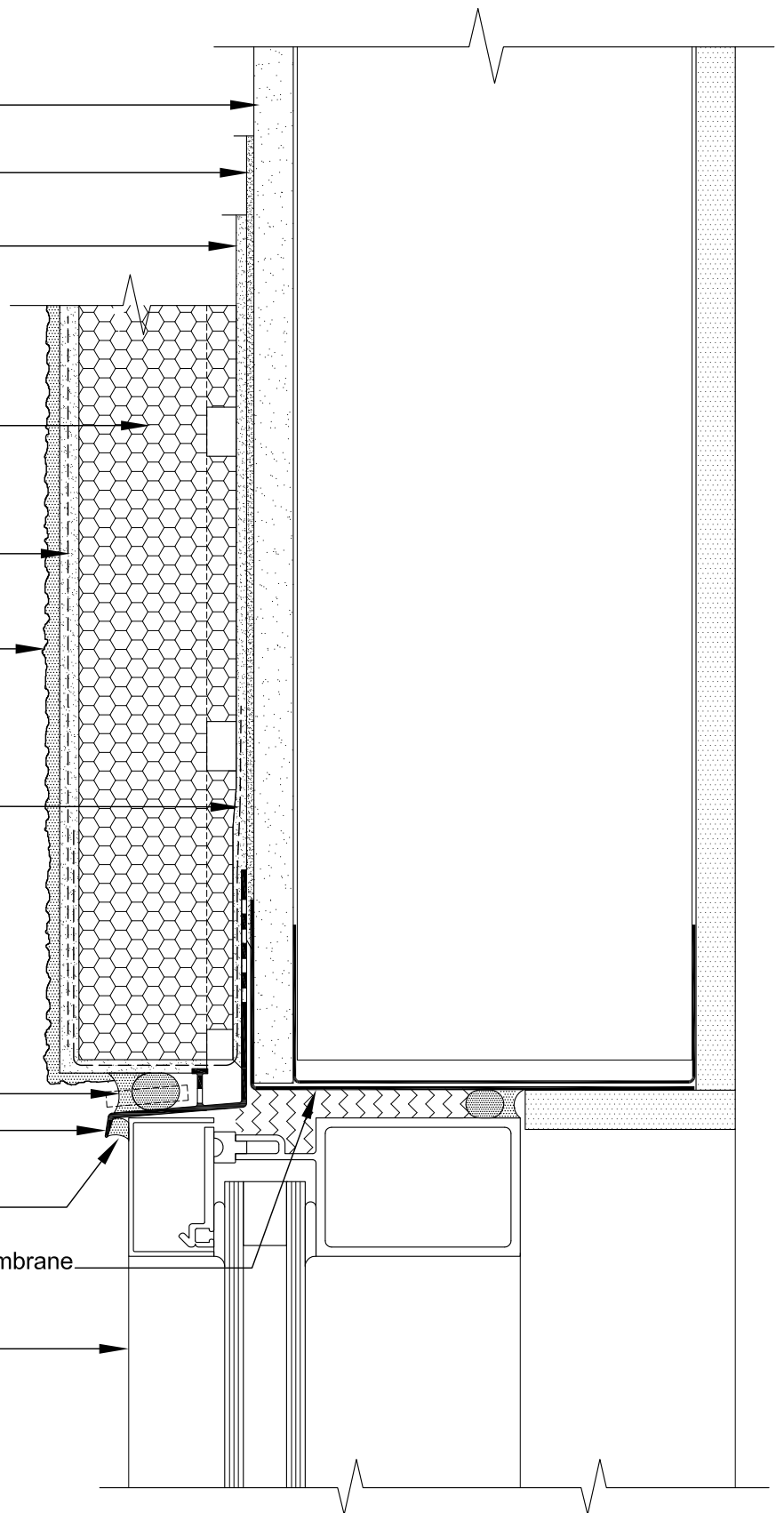
\* Optional Backer Rod and Sealant  
(vented)

DuROCK Uni-Flash  
self-flashing drainage track

\* Sealant under Uni-Flash

\* Self-Adhering Transition Membrane  
wrapped into rough opening

\* Window



(\* by others)

**PUCCS-CHRC**  
(FOR COMMERCIAL AND HIGH RISE CONSTRUCTION)

DRAWING TITLE:

**WINDOW HEADER (OPTION A)  
WITH DuROCK PVC UNI-FLASH**

This detail complements the corresponding system specification and illustrates the system configuration for the depicted construction. Visit [www.durock.com](http://www.durock.com) for the latest revisions and contact DuROCK for project-specific details to suit conditions other than those depicted. DuROCK assumes no liability for the architecture, design, engineering, or workmanship of any project.

**DuROCK**  
Alfacing International Limited  
101-B ROYTEC ROAD  
WOODBIDGE, ONTARIO  
TEL : (905) 856-0133, FAX : (905) 856-9654  
[www.durock.com](http://www.durock.com)  
ARCHITECTURAL FINISHING SYSTEMS

LAST REVISE: MAR 2017  
ISSUED: MAY 2007  
DRAWN BY: RIZ  
SCALE: NTS  
**PUCCS-CHRC**  
**D01**