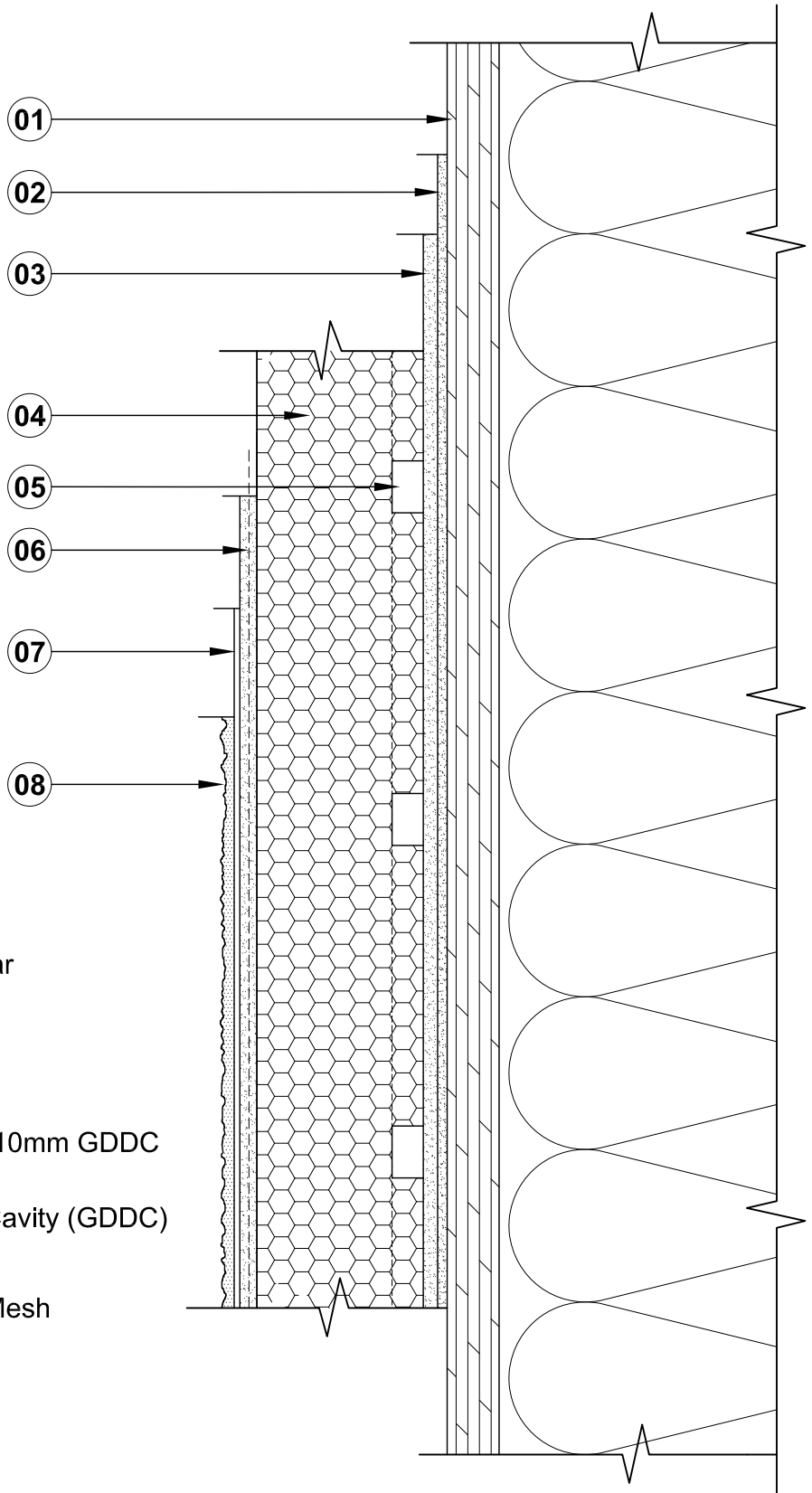




Pressure-Utilized Compartmented Cavity System

CCMC No. 12969-R



- 01 \* Wood Sheathing
- 02 DuROCK Roller Bear or Polar Bear Moisture Barrier
- 03 DuROCK Polar Bear Moisture Barrier/Adhesive
- 04 DuROCK PUCCS Insulation with 10mm GDDC
- 05 Geometrically Defined Drainage Cavity (GDDC) at the back of insulation board
- 06 DuROCK 5oz. Reinforcing Fibre Mesh embedded in Prep Coat
- 07 DuROCK Base Primer
- 08 DuROCK Finish Coat

(\* by others)

**PUCCS-LRRC**  
(FOR LOW-RISE RESIDENTIAL CONSTRUCTION)

DRAWING TITLE:

**PUCCS (LRRC)**  
**STANDARD SECTION DETAIL**

This detail complements the corresponding system specification and illustrates the system configuration for the depicted construction. Visit [www.durock.com](http://www.durock.com) for the latest revisions and contact DuROCK for project-specific details to suit conditions other than those depicted. DuROCK assumes no liability for the architecture, design, engineering, or workmanship of any project.

**DuROCK**  
Alfacing International Limited  
101-B ROYTEC ROAD  
WOODBRIDGE, ONTARIO  
TEL : (905) 856-0133, FAX : (905) 856-9654  
[www.durock.com](http://www.durock.com)  
ARCHITECTURAL FINISHING SYSTEMS

LAST REVISE: APR 2017  
ISSUED: MAY 2007  
DRAWN BY: RIZ  
SCALE: NTS  
**PUCCS-LRRC**  
**COVER**